



## Rethinking the Significance of Periodontal-Systemic Links and Building Dental-Medical Collaboration

- In the realm of periodontal-systemic links – what's real and what's hype?
- Can you explain to patients the significance of periodontal disease and why it's so important to treat it?
- How can you collaborate with medical and nursing professionals to care for patients who have periodontal disease?

Several decades of scientific inquiry have produced evidence that periodontal disease may increase risk for a number of inflammatory diseases and conditions: coronary artery disease and stroke, diabetes and its complications, adverse pregnancy outcomes, and pneumonia, among others.

Dentists and hygienists are well positioned to counsel, screen, and appropriately refer patients who are at risk for chronic diseases like cardiovascular disease, diabetes, and obesity. Likewise, physicians, nurses, pharmacists, dieticians, and other non-dental healthcare providers have an important role to play in screening and appropriately referring patients at risk for periodontal disease. This course will empower dental and medical practitioners to integrate periodontal-systemic science into everyday patient care with ease and confidence. The program also provides a template for jump-starting cross-disciplinary healthcare collaboration and helps the dental team reframe the "check-up" and "cleaning" appointment.



### LEARNING OBJECTIVES:

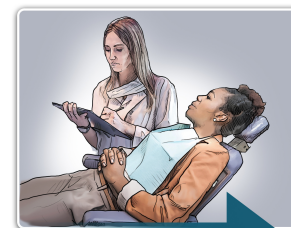
- Describe the significance of periodontal infection in amplifying systemic inflammation
- Implement a new model of risk assessment that focuses on the patient's cumulative inflammatory burden
- Screen and appropriately refer patients at risk for cardiovascular disease and diabetes
- Implement protocols for monitoring glycemic control in patients with diabetes or prediabetes
- Summarize clearly and simply, in patient-friendly language, the science behind periodontal-systemic interrelationships
- Build collaborative relationships with physicians, nurses and other non-dental healthcare professionals
- Implement bi-lateral point-of-care screening and referral for periodontal diseases and associated chronic diseases
- Identify barriers to implementing periodontal-systemic science into everyday patient care



Casey Hein, BSDH, RDH, MBA

[www.caseyhein.com](http://www.caseyhein.com) • [casey@caseyhein.com](mailto:casey@caseyhein.com) • 240-707-6766

## Bi-Lateral Point of Care Screening & Referral



Oral HCP screens patients for diabetes and CVD and refers to appropriate HCP



Non-dental HCP screens patients for periodontal disease and refers to appropriate oral HCP

### Full-Day Session

**MORNING SESSION:** At the end of the morning, Casey presents case studies that will challenge participants to overcome barriers associated with the care and co-management of patients with periodontal disease and chronic diseases.

**WORKING LUNCH:** The audience is divided into discussion groups during a working lunch.

**AFTERNOON SESSION:** With Casey's facilitation, individual groups present their findings on case studies and share applicable personal experiences.

**Suggested Audience:** Dentists, dental hygienists, dental assistants, business staff

**Alternative Format:** 4 hour program (no working lunch): Case studies are distributed before the program begins. During the final hour of the program, participants have the opportunity to weigh in on how they would manage various cases associated with periodontal-systemic risk.



Casey Hein  
& ASSOCIATES  
A DENTAL EDUCATION COMPANY